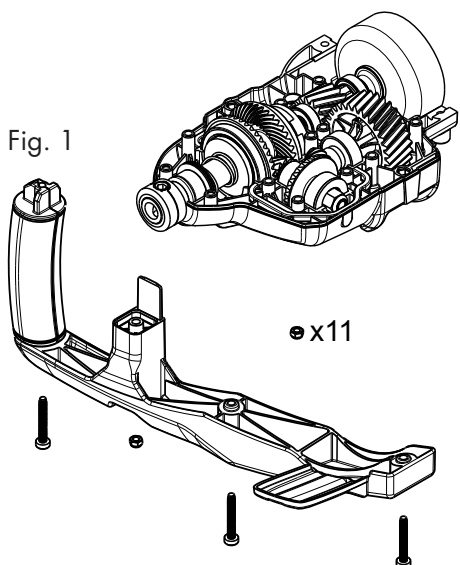


Remove
all screws
as shown

x11

Fig. 1



x11

STEP 1

View after removing
handles and LH
Casing Fig. 2

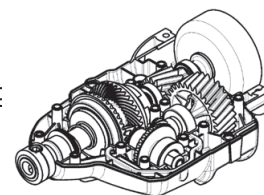


Fig. 2

STEP 2

Lift out clutch drum
and spur gear
assembly
Fig. 3

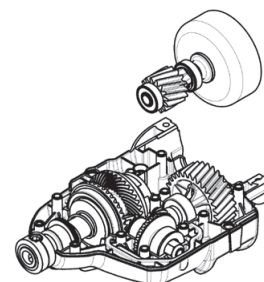


Fig. 3

STEP 3

Lift out spur drive
gear and pinion
assembly
Fig. 4

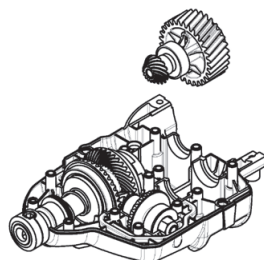


Fig. 4

STEP 4

Lift out pinion and
spiral crown gear
assembly
Fig. 5

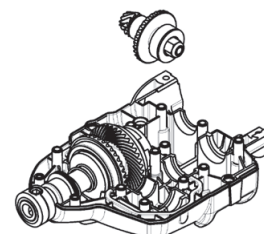


Fig. 5

STEP 5

Lift out main drive
gear assembly
Fig. 6

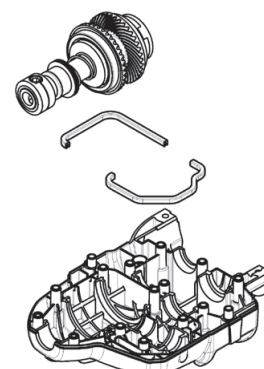


Fig. 6

Thoroughly
clean all parts

Atom products, including developments of **AIRLIFT**® and **BLOWMASTER**® blowers, blower anti-vibration handle system, **SMARTFAN**® impellers, and **DRILLMASTER**® engine powered drills with automatic reverse gear and rotary throttle control, are extensively protected by many Patents Pending, Patents, Registered Designs, and Registered Shapes and many Trade Marks including Atom Trade Mark 1,463,4000. Additionally, US Patent No. 8,210,272-B2 tiller construction also covers and protects Atom Lawn Edger construction.

Registration No. 1470990 is a REGISTERED SHAPE of the Atom Lawn Edger consisting of three dimensional shape of lawn edgers having a ground engaging wheel supporting a motor or engine and a pair of handles in a wheelbarrow-like configuration.

Atom Engine Drill: Inspect – Clean – Repair – Assemble

2. Lift Drum and spur gear shaft out of casing. To replace Drum, hold tightly in gloved hand and spin off clutch nut in left hand rotation (normal RH thread) with air ratchet Fig. 7.

To reassemble fit clutch hub, drum, washer and screw nut up fully by hand.

! NOTE Washer under nut must fit over and around clutch rib spigot.

Tighten nut by holding drum with gloved hand and air ratchet drive (right hand rotation).

! NOTE Spur gear and shaft replaced as on assembly as in Fig. 3.

3. To repair drive and pinion gears, remove 6mm screw. Slide parts off. Replace parts if required. Fig. 8.

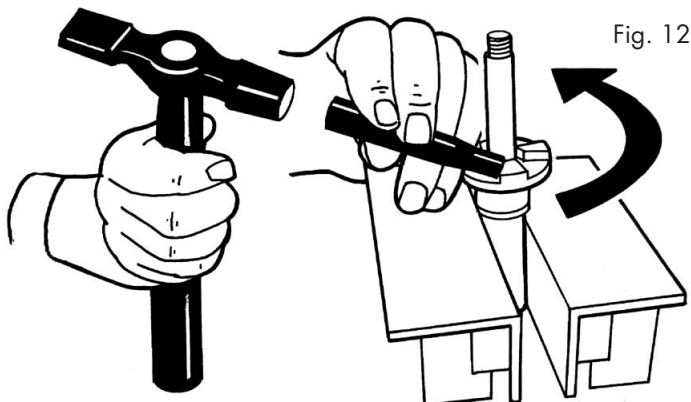
To remove pinion hold shaft in vice fitted with soft jaws (use two pieces aluminium angle) and remove pinion in right hand rotation (left hand thread). Fig. 9.

4. To replace pinion or spiral crown gear assembly, hold outer gear diameter in vice with soft jaws and remove nut in left hand (normal RH thread) rotation. Fig. 10.

5. To replace gears, bearings, clutch dogs, place rear end dog clutch vertically in a strong vice (Fig. 11) fitted with soft jaws or use two pieces of aluminium angle.

Remove locking collar, insert 12mm bar through grub screw hole as shown in Fig. 11. Turn shaft clockwise (LH thread) to remove clutch dog. Slide off all parts and inspect. Replace as required. Reverse process to assemble.

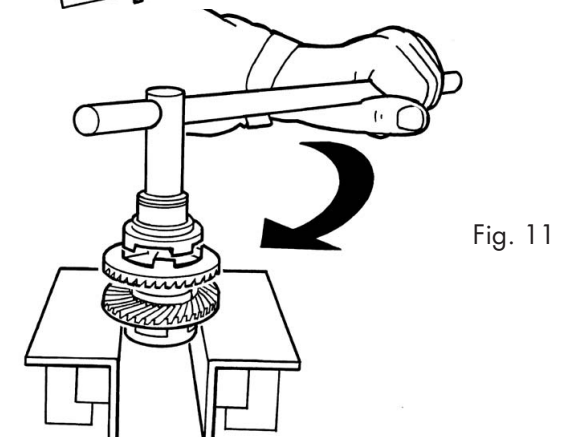
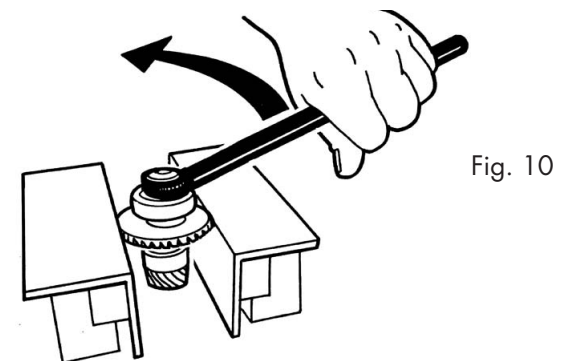
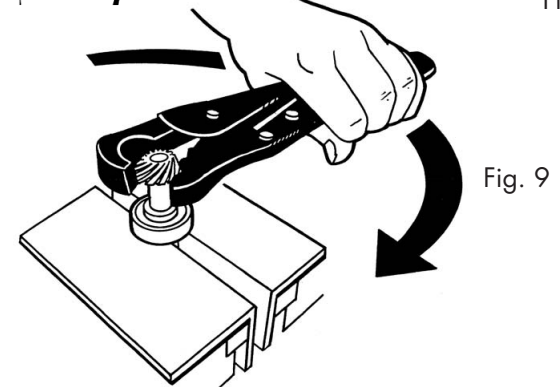
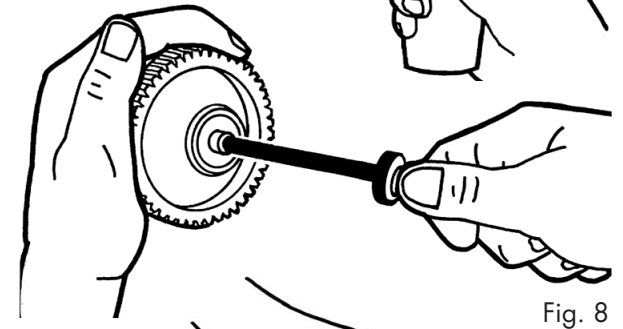
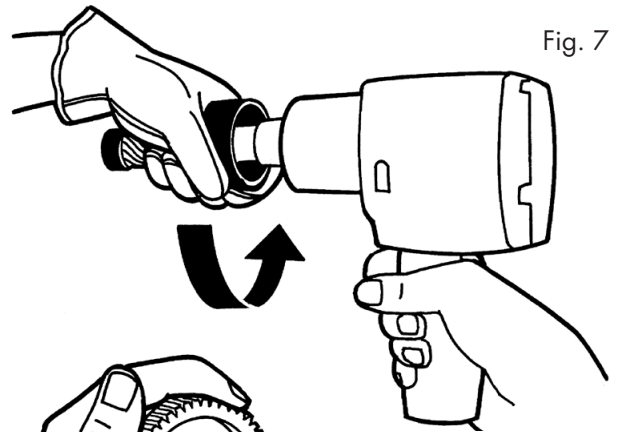
6. To remove front gear dog, place shaft in vice (Fig. 12) and tap counter clockwise (normal RH thread).



Clean all parts before reassembly. To assemble reverse above procedure. Re-assemble in (reverse) sequence of Fig. 6, 5, 4, 3 and 2. Thoroughly grease all parts and pack about 30cc of grease in and around all gear teeth. Install 2 casings rubber gaskets, place top casing on, use 4-5 screws to hold together then check gears turn smoothly. Complete final assembly.

! NOTE For engine explosions and Parts list, visit our website: www.atomindustries.com

Go to **Find Parts, Order & Service Info** page and enter the engine model number. Refer to Parts List attached.



Atom Industries is a division of Solo Industries Pty Ltd – an Australian owned company that invents, designs and manufactures unique and outstanding products for local tough and hard Australian conditions with a history of international award winning gold medals, great backup and service since 1961. Atom has a policy of continuous product improvement and development and reserves the right to modify the design and appearance of products without notice.