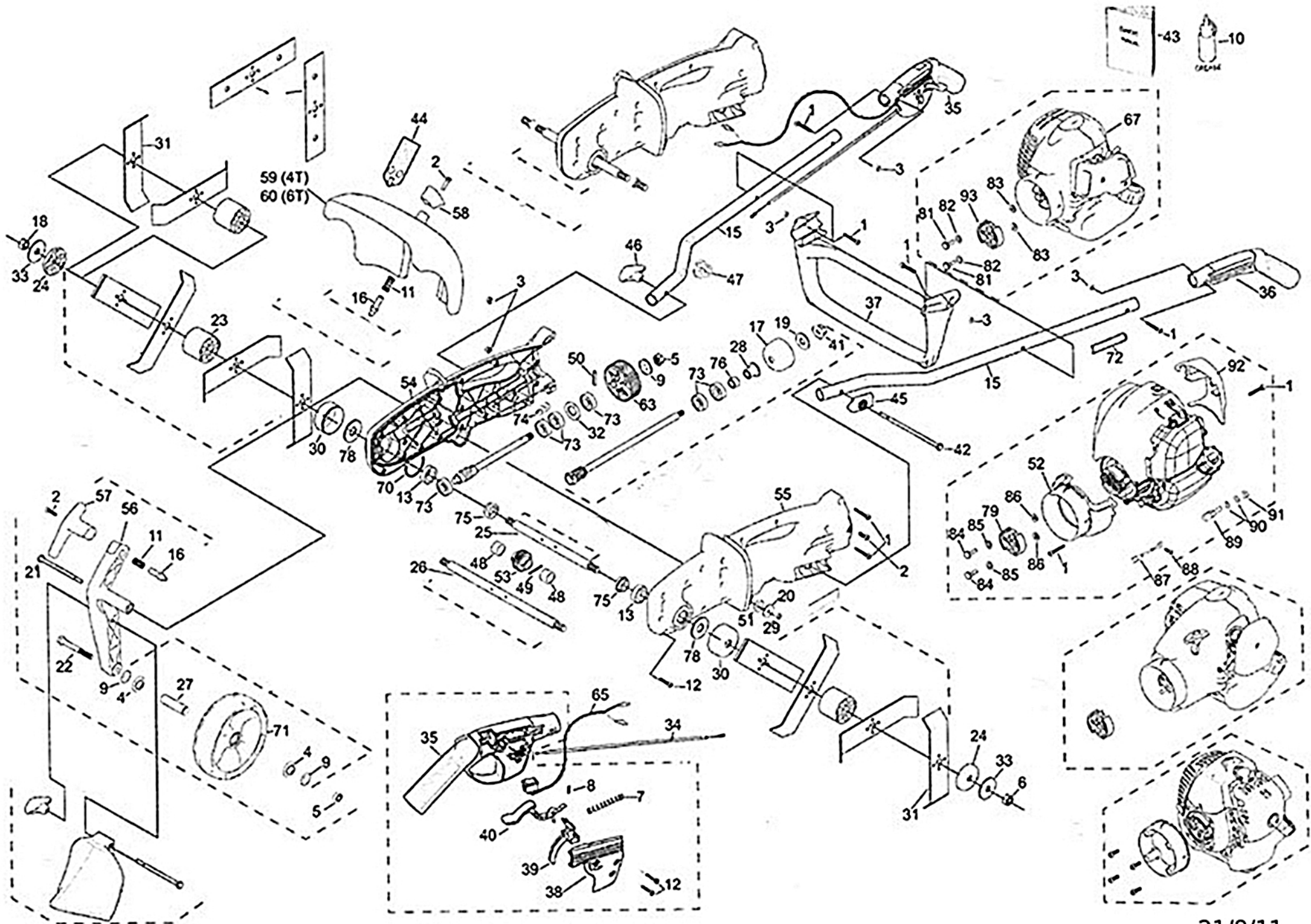


ATOM 731 TILLER WITH ATOM 26FC FULL CRANK ENGINE



6/09/2022

ATOM MODEL: 731 TILLER with 26FC Atom Engine

PART NO: 20731

Key	Part No	Substitute Part No	Description	Key	Part No	Substitute Part No	NLA	Description	Key	Part No	Substitute Part No	NLA	Description
1	40650		SCREW M5x36 TORX25	32	62982			BEAR WASHER 31.8x18.5x1.6	63	63780	63978A		TILL ASSY SHAFTGEAR 38/10T
2	40651		SCREW M6x16 TORX25	33	62983			WASHER BLADES 54x12.2x2	64	63387	63978A		TILL ASSY SHAFTGEAR 38/10T
3	40652		NUT NYLOC M5	34	63002			CABLE THROTTLE 910+62	65	63400			ROCKER SWITCH WITH WIRE
4	42111		WHEEL SEAL 27.2x12.6	35	63017BS			HANDLE RH w/RUBBER	66	63411A	65312A		TILL MACH WORM GEAR KIT
5	43172		NUT NYLOC 3/8 UNC	36	63019BS			HANDLE LH w/RUBBER	67	63424	65195A		ENG ATOM 26FC5 w/COVERS
6	43173		NUT M12x1.75 RH	37	63020WE			HANDLE CROSS BRACE	69	63410			SHAFT T PINION WORM
7	43198		SPRING TRIGGER COMPRESS	38	63021WP			COVER RH HANDLE GREY	70	63439		X	SEAL U GEAR BOX TILLER
8	43199		SPRING SMALL INTERLOCK	39	63883S			SET TRIG & INTERLOCK	71	64967BP			EDGER DOM WHEEL
9	43218		WASHER 3/8 20x1.8x26	40	63883S			SET TRIG & INTERLOCK	72	64378			LABEL WARN BLADE COVER
10	43227		GREASE & DISPENSER	41	43163			NUT FLANGE 3/8 UNC	73	63474			BEARING 32x10x12
11	43452		SPRING HT ADJ ARM COMP	42	63049			BOLT HEX 6.5x1/4 BSW	74	63533WE			HOOK EDGER CABLE BODY
12	43790		SCREW M5.5 x 22	43	21775			MANUAL ALL MODELS	75	63771		X	SPACER GREASE SAVER TILLER
13	43868		BEARING 6003-2RS 4.5x17ID	44	63065			LABEL WARN TILLER GUARD	76	63772			SPACER MAIN SHAFT TILLER
14	44006		NUT 1/4 UNC 10.9mm	45	63187BN			CAPTIVE PLATE 1/4 HEX BOLT	77	63867			NUT 3/8 HOLDING
15	44060		HANDLE TUBE	46	63488A			ASSY HANDLE KNOB+NUT	78	63868			WASHER 25x17x 2
16	62723		PIN ADJ M6x1.0	47	63217BN			CLIP-HANDLE CABLE&WIRE	79	63555A			CLUTCH ASSY GX25-26KZ-ATOM
17	44318		DRUM CLUTCH CUP 54mm	48	63261			SPACER TILLER GEAR STEEL	80	63405A	65195A		ENG ATOM 26FC5 w/COVERS
18	45112		NUT M12x1.75 LH	49	63269			PIN ROLL 6 x 30 TL	81	63553			FC/HPE CLUTCH BOLT M6
19	63277		WASHER CL DRUM 12x27x2	50	63275			PIN ROLL 5 x 30 DR-TL	82	63554			CLUTCH WASHER WAVY
20	62795		WASH 28.5x1.6x1/4 PRO MK2	51	63224	63348		O-RING 18 x 4mm	83	63556			CLUTCH WASHER FLAT
21	62843		HEX BOLT 3.5x1/4 BSW	52	63230	63360RN		MOUNT ENGINE KZ26	84	63553			FC/HPE CLUTCH BOLT M6
22	62844		HEX BOLT 3x3/8 BSW	53	63368	65312A		TILL MACH WORM GEAR	85	63554			CLUTCH WASHER WAVY
23	62851WP		TINE SPACER LARGE 45.5mm	54	63912WN			SET LH+RH TILL GREY	86	63556			CLUTCH WASHER FLAT
24	62852WP		TINE SPACER SMALL 10mm	55	63912WN			SET LH+RH TILL GREY	87	63355			GROUND WIRE
25	62891		SHAFT TINE 250mm	56	63376WP			WHEEL ARM TILLER	88	43181			SCREW M5x12
26	62892		SHAFT TINE 350mm	57	63377WP			HEIGHT ADJ HANDLE ARM	89	62968			PRO CARBY CONN M6x1.0
27	62903		TUBE SPACER WHL 41.5mm	58	63378WP			KNOB COVER TILLER	90	63457			WASHER 6.4x12.5x1.5
28	64119		HUB SINTERED 11.5mm	59	63380WE			COVER TINE 250 (U-GAP 87)	91	63169			NUT M6x1.0
29	62919		NUT NYLOC 1/4 UNC	60	63381WE			COVER TINE 350 (U-GAP 87)	93	63555A			CLUTCH ASSY GX25-26KZ-ATOM
30	62921		DRUM TINE 17mm	61	63384		X	GEAR SEAL TILLER					
31	62948		TILLER TINE SINGLE	62	63781	63978A		TILL ASSY SHAFTGEAR 38/10T					

For information on the Atom 26FC engine go to Ref 767 at 'Petrol Engines, Parts and Drawings'.