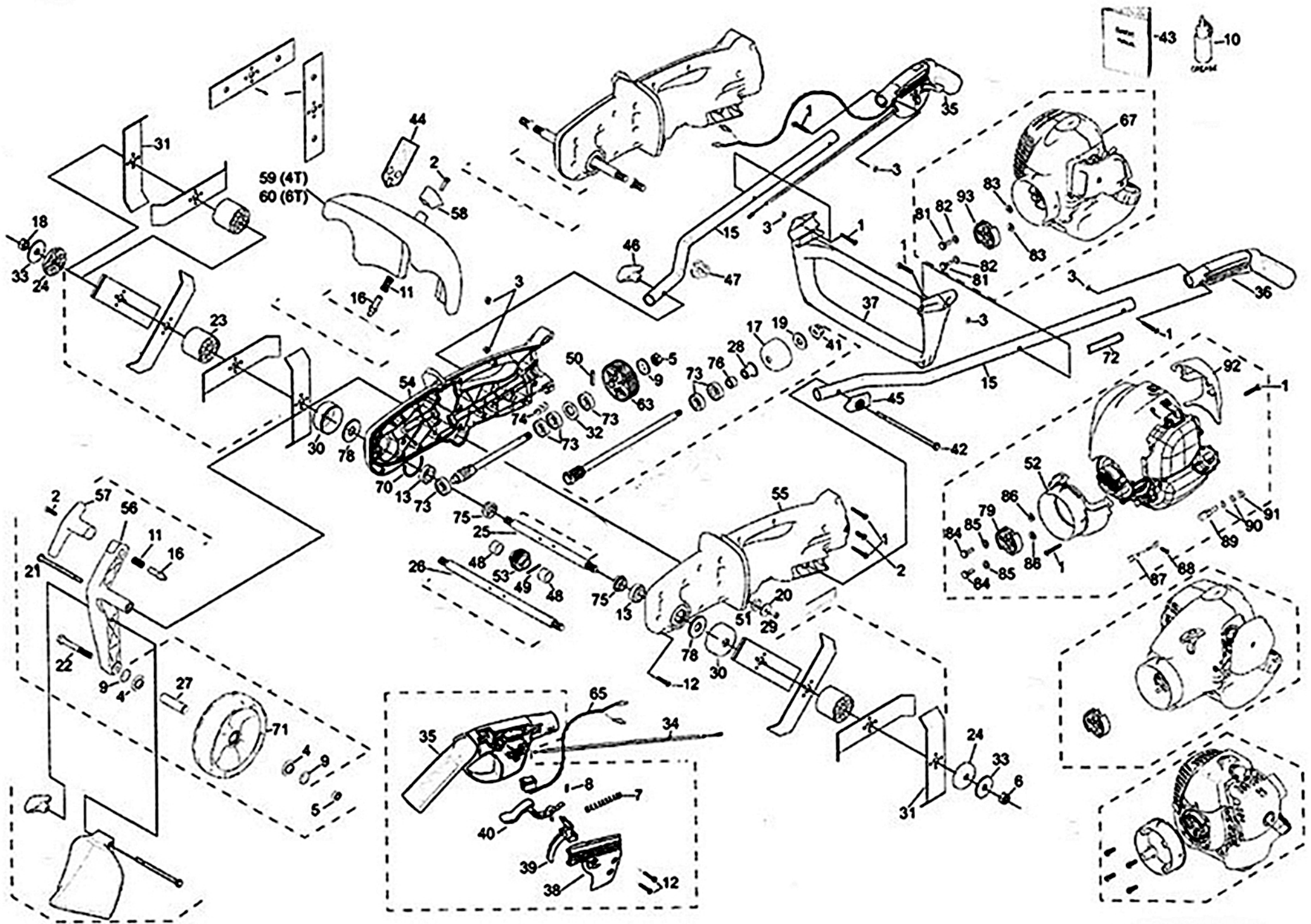


ATOM 740 TILLER WITH HONDA GX25 ENGINE



31/08/2022

ATOM MODEL: 740 TILLER with GX25 engine

PART NO: 21740

Key	Part No	Substitute Part No	Description	Key	Part No	Substitute Part No	Description	Key	Part No	Substitute Part No	NLA	Description
1	40650		SCREW M5x36 TORX25	34	63002		CABLE THROTTLE 910+62	70	63439		X	SEAL U GEAR BOX TILLER
2	40651		SCREW M6x16 TORX25	35	63017BS		HANDLE RH w/RUBBER	71	64967BP			EDGER DOM WHEEL
3	40652		NUT NYLOC M5	36	63019BS		HANDLE LH w/RUBBER	72	64378			LABEL WARN BLADE COVER
4	42111		WHEEL SEAL 27.2 x12.6	37	63020WE		HANDLE CROSS BRACE	73	63474			BEARING 32x10x12
5	43172		NUT NYLOC 3/8 UNC	38	63021WP		COVER RH HANDLE GREY	74	63533WE			HOOK EDGER CABLE BODY
6	43173		NUT M12x1.75 RH	39	63883S		SET TRIG & INTERLOCK	75	62972			SEAL TINE TILL SHAFT
7	43198		SPRING TRIGGER COMP	40	63883S		SET TRIG & INTERLOCK	76	63772			SPACER MAIN SHAFT TILLER
8	43199		SPRING SMALL INTERLOCK	41	43163		NUT FLANGE 3/8 UNC	77	63867			NUT 3/8 HOLDING
9	43218		WASHER 3/8 ZP 20x1.8x26	42	63049		BOLT HEX 6.5x1/4 BSW	78	63868			WASHER 25x17x 2
10	43227		GREASE & DISPENSER	43	21775		MANUAL ALL MODELS	79	63555A			CLUTCH ASSY GX25-26KZ-ATOM
11	43452		HT ADJ ARM COMP SPRING	44	63065		LABEL WARN TILLER GUARD	80	65195A			ENG ATOM 26FC5 w/COVERS
12	43790		SCREW M5.5x22	45	63187BN		CAPTIVE PLATE 1/4 HEX BOLT	81	63553			FC/HPE CLUTCH BOLT M6
13	43868		BEARING 6003-2RS 4.5x17ID	46	63488A		ASSY HANDLE KNOB+NUT	82	63554			WASHER WAVY
14	44006		NUT 1/4 UNC 10.9mm	47	63217BN		CLIP-HANDLE CABLE&WIRE	83	63556			WASHER FLAT
15	44060		HANDLE TUBE	48	63261		SPACER TILL GEAR STEEL	84	63553			FC/HPE CLUTCH BOLT M6
16	62723		ADJ PIN M6x1.0	49	63269		PIN ROLL 6x30 TL	85	63554			WASHER WAVY
17	44318		DRUM CLUTCH CUP 54mm	50	63275		PIN ROLL 5x30 DR/TL	86	63556			WASHER FLAT
18	45112		NUT M12x1.75 LH	51	63224	63348	O-RING 18x4mm	87	63355			GROUND WIRE
19	63277		WASHER CL DRUM 12x27x2	52	63806RN		GX25 MOUNT/FAN COVER	88	43181			SCREW 5x15
20	62795		WASH 30x1.6x1/4 PRO MK2	53	63368	65312A	TILL MACH WORM GEAR KIT	89	62968			PRO CARBY CONN M6x1.0
21	62843		HEX BOLT 3.5x1/4 BSW	54	63912WN		SET LH+RH TILLER GREY BODY	90	63457			WASHER 6.4x12.5x1.5
22	62844		HEX BOLT 3x3/8 BSW	55	63912WN		SET LH+RH TILLER GREY BODY	91	63169			NUT M6x1.0
23	62851WP		TINE SPACER LARGE 45.5mm	56	63376WP		ARM WHEEL TILLER	92	43966RN			GX25 AIR DEFLECTOR
24	62852WP		TINE SPACER SMALL 10mm	57	63377WP		HEIGHT ADJ HANDLE ARM	93	63555A			CLUTCH ASSY GX25-26KZ-ATOM
25	62891		SHAFT TINE 250mm	58	63378WP		KNOB COVER TILLER					
26	62892		SHAFT TINE 350mm	59	63380WE		COVER TINE 250 (U-GAP 87)					
27	62903		WHEEL TUBE 41.5mm	60	63381WE		COVER TINE 350 (U-GAP 87)					
28	64119		HUB SINTERED 11.5mm	62	63781	63978A	TILL ASSY SHAFT GEAR 38/10T					
29	62919		NUT NYLOC 1/4 UNC	63	63780	63978A	TILL ASSY SHAFT GEAR 38/10T					
30	62921		DRUM TINE 17mm	64	63978A	63978A	TILL ASSY SHAFT GEAR 38/10T					
31	62948		TILLER TINE SINGLE	65	63400		ROCKER SWITCH WITH WIRE					
32	62982		WASH BEARING 31.8x18.5x1.6	67	65195A		ENG ATOM 26FC5 w/COVERS					
33	62983		WASHER BLADES 54x12.2x2	69	63410		SHAFT T PINION WORM					

For information on the Honda GX25 engine, see Ref 764 at 'Petrol Engines, Parts and Drawings'.