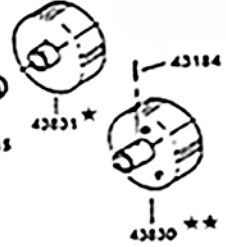
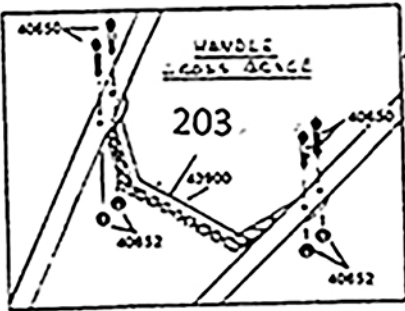
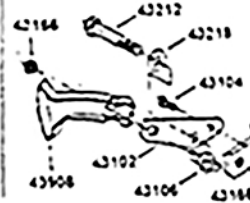
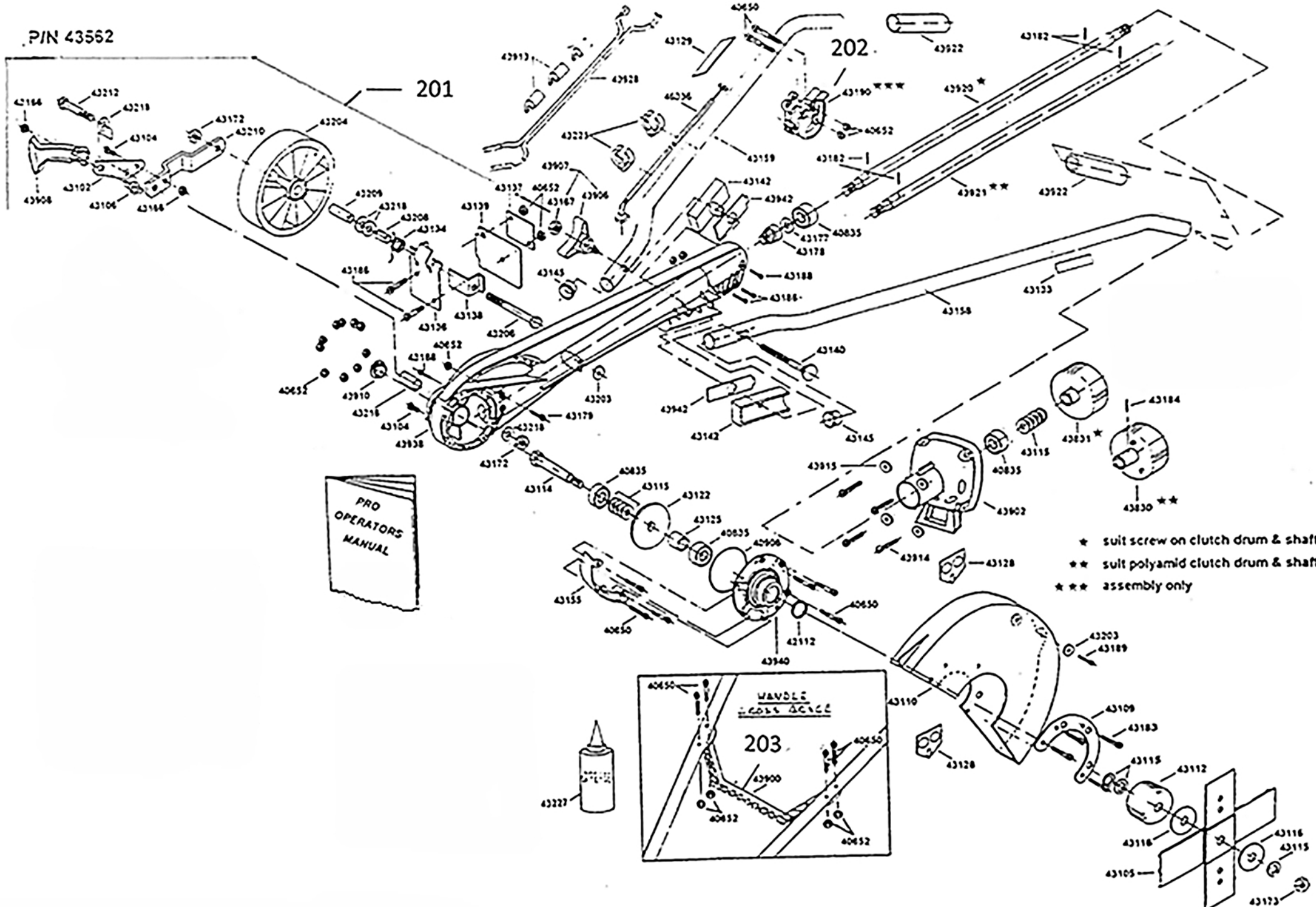


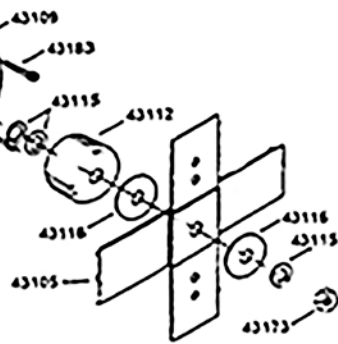
ATOM 102 PRO EDGER with G3KD Zenoah engine

Part no: 20102

P/N 43562



- * suit screw on clutch drum & shaft
- ** suit polyamid clutch drum & shaft
- *** assembly only



31/08/2021

ATOM MODEL: 102 EDGER with G3KD Zenoah engine

PART NO: 20102

Key	Part No	Substitute Part No	NLA	Description	Order Part	Key	Part No	Substitute Part No	NLA	Description	Order Part	Key	Part No	Substitute Part No	NLA	Description	Order Part
1	40650			SCREW M5x36 TORX25		31	43145		X	(NLA)HANDLE END PLUG		64	43830			DRUM PRO CLUTCH PLASTIC	
2	40652			NUT NYLOC M5		32	43155			BODY MAIN SHIELD PRO		65	43831			CLUTCH DRUM PRO (SCREW T)	
3	40835	63474		BEARING 32x10x12		33	43158			HANDLE MAIN LH (PRO)		66	43900	63020WE		HANDLE CROSS BRACE	
4	40837			NUT NYLOC M10 x 1.25		34	43159			HANDLE MAIN RH (PRO)		67	43902			COVER PRO CLUTCH RED	
5	40906	65164		O-RING 63x2.0		35	43166			NUT NYLOC 5/16		68	43906	63488A		ASSY HANDLE KNOB+NUT	
6	42112		X	(NLA) SEAL FELT		36	43167	63488A		ASSY HANDLE KNOB+NUT		69	43908	63432RNK		ASSY WL+A 5mm	
7	43102			SPRING ADJ ARM		37	43172			NUT NYLOC 3/8 UNC w/AXLE		70	43910	62936WN		CAP DUST EDGER	
8	43104		X	(NLA)SCREW HEX 5/16x5/8		38	43173			NUT M12 x 1.75 RH		71	43913	63217BN		CLIP-HANDLE CABLE&WIRE	
9	43105			BLADE SET 10.2/3 (271mm)		39	43177			WASHER PINION .060		72	43914			SCREW 25x6mm HEX HEAD	
10	43106			BOLT & P ADJ. ARM		40	43178	43176		GEAR PINION 25.5mm		73	43915			WASHER	
11	43109	43484		BLADE SUP. Use 3x43484		41	43179			SCREW TRIM COVER M5x39		74	43920		X	(NLA)SHAFT PRO DRIVE	
12	43110			COVER BLADE		42	43182			PIN ROLL 3/16x11/16		75	43921		X	(NLA)SHAFT PRO DRIVE	
13	43112			DRUM BLADE		43	43183			SCREW M5x38mm		76	43922		X	HANDLE GRIP RUBBER	
14	43114			SHAFT BLADE EDGER		44	43184	63275		PIN ROLL 5x30 DR/TL		77	43928			WIRE SWITCH PRO	
15	43115			WASHER BLADE BEVEL		46	43188	43189		SCREW S/T M5x20		78	43938			BODY PRO RED	
16	43116			PRO DRUM WASH 45x12.2x2		47	43189			SCREW S/T M5x20		79	43940			BODY PRO MAIN COVER	
17	43123			MTD WASHER CLUTCH		48	43190	43196		ASSY THR TRIG		80	43942		X	HANDLE AV RUBBER PLATE	
18	43125			SPACER 15.5mm		49	43203	43484		WASH 22.43x5.94 ZP		81	43946	63869A		ASSY ENG MITSU TLE33FA	
19	43127	63219		LABEL HOT MOTOR/OIL CLEAN		50	43204			ASSY WHEEL		82	46336		X	CABLE	
20	43128	64378		LABEL WARN BLADE COVER		51	43206	44432		BOLT DEBRIS DEF.3/8x4.5		83	63432RNK			ASSY WL+A 5mm	
23	43133	63466		LABEL HANDLE SAFETY		52	43208			TUBE WHEEL AXLE 45mm		84	44301-R			ASSY ARM w/o WHEEL	
24	43134	43719		SPRING DEFLECTOR DEBRIS		53	43209			SPACER WHEEL 49mm ZP		85	44500R			ASSY WH ARM	
25	43136	43135	X	SHIELD GRASS		54	43210			ARM WHEEL SUPPORT		86	46159			G3K/34L CLUTCH ASSY (8.5)	
26	43137	43135	X	SHIELD GR COVER		55	43212			BOLT WHEEL 3/8x2.1/4		88	63472WHP			HANDLE LH DOM	
27	43138		X	SHIELD GR LIM		56	43216			SPACE HT ADJ. SHAFT 35mm		201	63432RNK			ASSY WL+A 5mm	
28	43139	43135	X	FLAP GRASS RUBBER		57	43218			WASH 3/8 ZP 20x1.8x26		202	43196			ASSY THR TRIG	
29	43140			BOLT HANDLE 5/16x6		58	43225	63217BN		CLIP-HANDLE CABLE&WIRE		203	63020WE			HANDLE CROSS BRACE	
30	43142	63401BS		AV SADDLE RUBBER		59	43227			GREASE & DISPENSER							

For information on the G3KD Zenoah engine go to Ref 761 at 'Petrol Engines, Parts and Drawings'